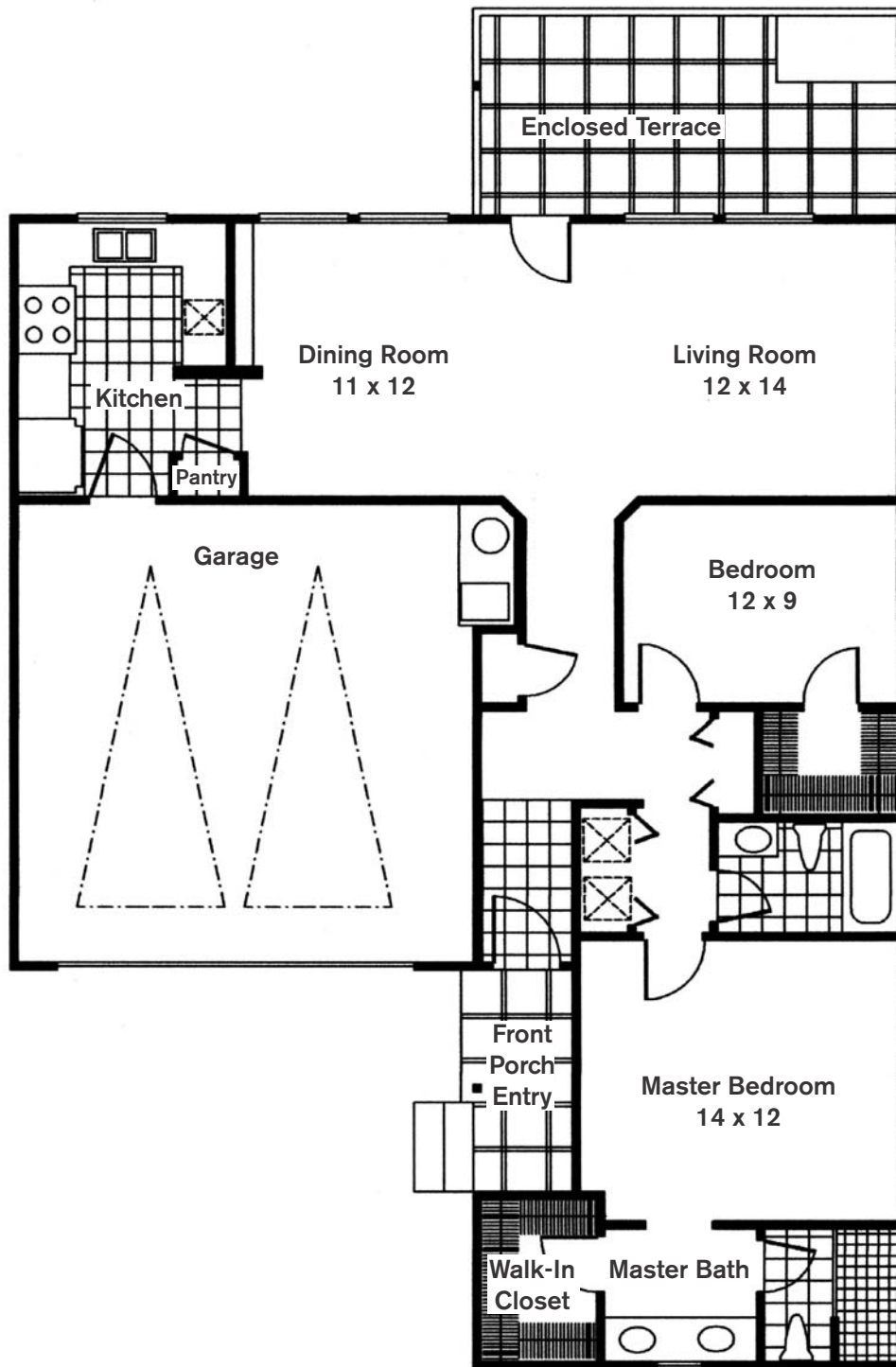


# The Pinyon (F Plan) Back Unit



## Features:

- 1,272 Sq. Ft. (Taken from Builder's Plan)
- Two Bedrooms – 2 Baths
- Two Car Garage
- Large Spacious Master Bedroom
- Master Bathroom with Double Vanity, Walk-in Closet, and Sit-Down Shower
- Kitchen Overlooks Dining Room and Living Room
- Access to Privately Enclosed Terrace from the Living Room